

# \$459,000 - 14 Hammett Gate, Spruce Grove

MLS® #E4430963

**\$459,000**

3 Bedroom, 2.50 Bathroom, 1,673 sqft  
Single Family on 0.00 Acres

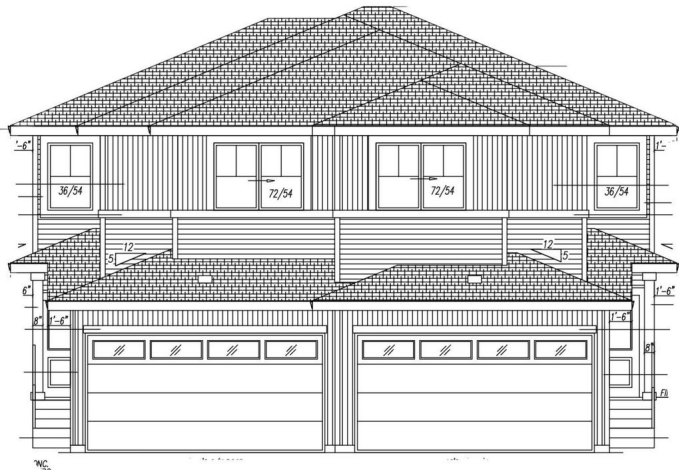
Hilldowns, Spruce Grove, AB

Introducing a beautifully crafted, brand new SIDE BY SIDE DUPLEX in the sought-after Hilldowns community of SPRUCE GROVE. Spanning nearly 1,673 sq. ft., this home offers an ATTACHED DOUBLE GARAGE and a SEPARATE SIDE ENTRANCE- TWO WINDOWS IN THE BASEMENT perfect for a future legal basement suite. The main floor features a bright open-concept layout with premium finishes and a versatile den. Upstairs, enjoy a spacious bonus room, THREE generously sized BEDROOMS, TWO FULL BATHROOMS, and a convenient laundry room. Thoughtfully designed for both style and function, this home is ideal for families or investors. Ready for JUNE POSSESSION—your opportunity to live and invest in comfort!

Built in 2025

## Essential Information

|                |           |
|----------------|-----------|
| MLS® #         | E4430963  |
| Price          | \$459,000 |
| Bedrooms       | 3         |
| Bathrooms      | 2.50      |
| Full Baths     | 2         |
| Half Baths     | 1         |
| Square Footage | 1,673     |
| Acres          | 0.00      |



|            |               |
|------------|---------------|
| Year Built | 2025          |
| Type       | Single Family |
| Sub-Type   | Half Duplex   |
| Style      | 2 Storey      |
| Status     | Active        |

### Community Information

|             |                 |
|-------------|-----------------|
| Address     | 14 Hammett Gate |
| Area        | Spruce Grove    |
| Subdivision | Hilldowns       |
| City        | Spruce Grove    |
| County      | ALBERTA         |
| Province    | AB              |
| Postal Code | T7X 0V2         |

### Amenities

|           |                        |
|-----------|------------------------|
| Amenities | Ceiling 9 ft.          |
| Parking   | Double Garage Attached |

### Interior

|                   |   |
|-------------------|---|
| Interior Features | ensuite bathroom  |
| Appliances        | Garage Control, Garage Opener, Builder Appliance Credit |
| Heating           | Forced Air-1, Natural Gas                               |
| Stories           | 2   |
| Has Basement      | Yes   |
| Basement          | Full, Unfinished  |

### Exterior

|                   |  |
|-------------------|--|
| Exterior          | Wood, Vinyl                            |
| Exterior Features | Park/Reserve, Schools, Shopping Nearby |
| Roof              | Asphalt Shingles                       |
| Construction      | Wood, Vinyl                            |
| Foundation        | Concrete Perimeter                     |

### Additional Information

|                |                  |
|----------------|------------------|
| Date Listed    | April 15th, 2025 |
| Days on Market | 10               |
| Zoning         | Zone 91          |

DATA IS DEEMED RELIABLE BUT IS NOT GUARANTEED ACCURATE BY THE REALTORS® ASSOCIATION OF

EDMONTON. COPYRIGHT 2025 BY THE REALTORS® ASSOCIATION OF EDMONTON. ALL RIGHTS RESERVED.Trademarks are owned or controlled by the Canadian Real Estate Association (CREA) and identify real estate professionals who are members of CREA (REALTOR®, REALTORS®) and/or the quality of services they provide (MLS®, Multiple Listing Service®)

Listing information last updated on April 25th, 2025 at 10:17am MDT